

Connection Setup For Mac OS 10.3

STEP ONE: Open The Network Preferences Tab

In the upper left hand corner of the screen, click on the Apple, and then click on “System Preferences.”



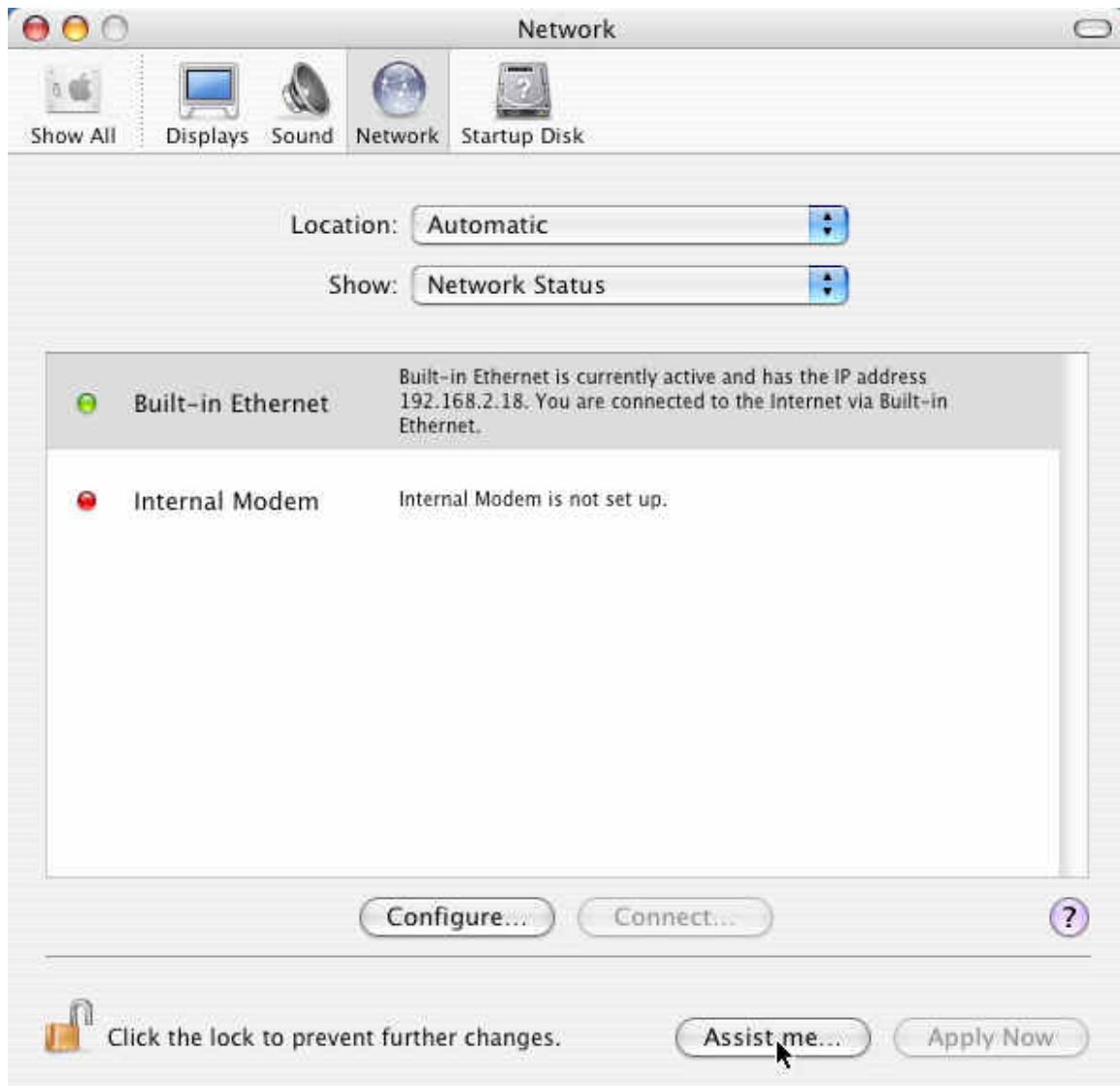
Once the System Preferences are open, click on the “Network” preferences tab.



Once it is open, proceed to the next step.

STEP TWO: Open the “Network Setup Assistant”

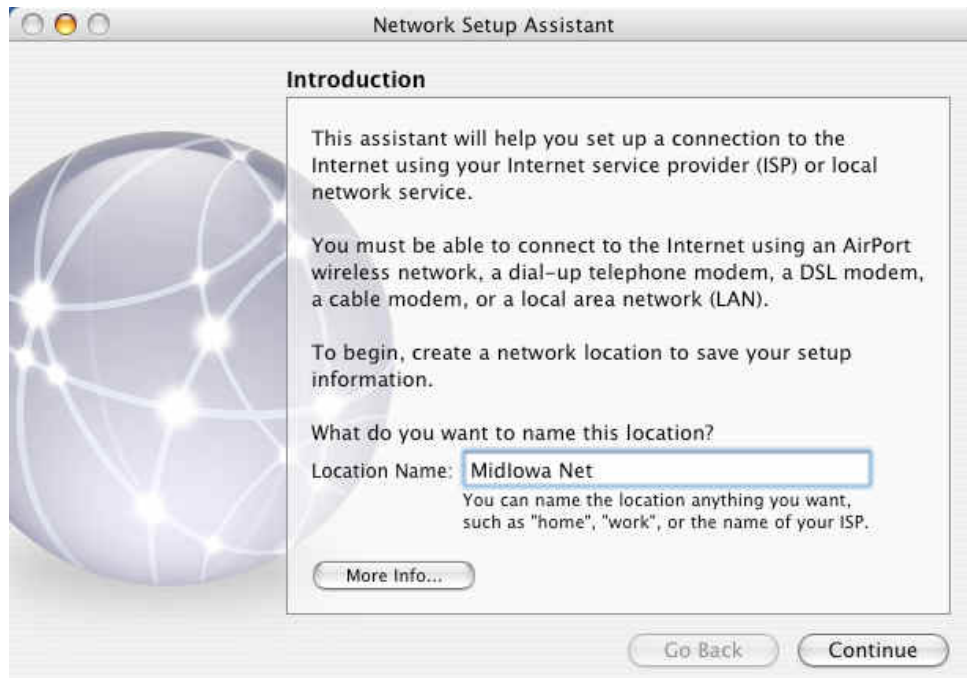
Inside the Network Preferences tab, click the “Assist Me” button at the bottom.



The “Network Setup Assistant” is a program designed to help you easily set up your connection to MidIowa Net. The following steps will lead you through the assistant to get you connected to the Internet.

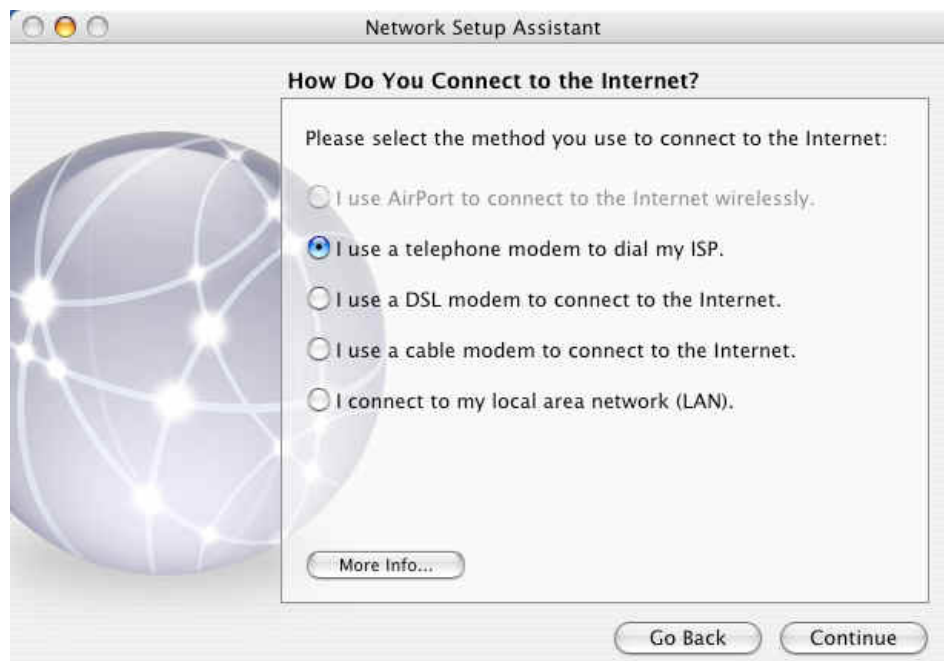
STEP THREE: Introduction to the Network Setup Assistant

The introduction to the wizard will appear on your screen after selecting “Assist me...” from Step 2. You will need to replace the “Location (*Some Date and Time*)” with “MidIowa Net” and then click “Continue”



STEP FOUR: Choose How You Connect

The default selection of “I use a telephone modem to dial my ISP” is correct. You can just click “Continue” again.



STEP FIVE: Setting Up The Connection

You can enter the information needed to connect to MidIowa Net in this screen. The “Account Name” is your *primary* account with MidIowa Net, and can be found on your registration form. In this example, the user “jdoe” has entered their user name in the “Account Name” field. In most cases, it is simply your MidIowa Net email address without the @midiowa.net end (“jdoe” has an email address of jdoe@midiowa.net in this example situation). Also, you will need to enter your user name in all lower-case letters!

Your password is the password on your account. When you enter it, little “bullets” on the screen will obscure it. This is normal. You will also need to enter the password in twice: once on the first part, called “Password,” and again on the later part, called “Password (Verify).” This is simply to ensure that the password is entered correctly. Like with the username, these need to be lower-case.

If you need either of these pieces of information, feel free to call (515)-382-2124, and we can provide you with your username or password. **Be very careful to type your username and password in all lower-case letters.** You will be unable to connect if this is not done.

The telephone number should be entered as “382-4997” for most users, even those that are not in the area of Nevada. If you experience problems connecting, and have a “premium” calling plan with Iowa Telecom, contact us for a resolution.

Most users will not need to enter a number to get an outside line. If you do require such a number, you can input it here. Also, if you have call waiting, select “Yes.” Most users can leave it as “No.”

Select “Continue” when you are finished.

Network Setup Assistant

Setting Up a Telephone Modem Connection

You need to enter information before you can connect. If you don't have this information, contact your ISP.
If you use AOL, please quit Network Setup Assistant. Use the Network preference to set up your connection.

Account Name:

Password:

Password (Verify):

ISP Phone Number:

Number to get an outside line:

Do you have call waiting? Yes No

STEP SIX: Select Your Modem

Whew! We're almost done with the assistant. Here on this window, you can select your modem type. For almost all users, the default of "Apple Internal 56K Modem (v.90)" is exactly what you want. "Ignore dial tone" should also be unselected. Press "Continue" when you are finished.



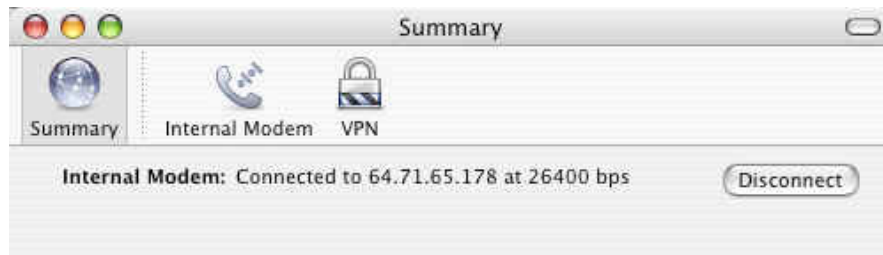
STEP SEVEN: Testing the Connection

Let's see if it works: when you are ready, select "Continue," and the computer will try to connect to MidIowa Net.



STEP EIGHT: You're Finished!

If you are connected, you should see a screen like this one:



If you do, then everything's working great! You can select "Disconnect" to get off the Internet, and close any windows that are open. If a program asks you to save your settings, select "Yes."

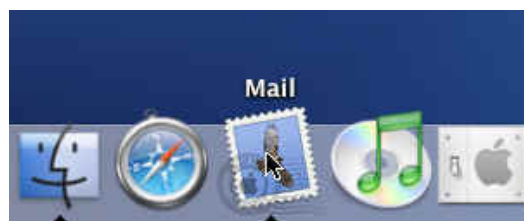
When you would like to get on the Internet, you can go to the upper-right hand corner and click on the little phone symbol, and select "Connect."



E-Mail Setup

STEP ONE: Open Mail

Most users of OS X find that the program "Mail" fulfils all their email reading requirements. You can start this program by going down to the dock and selecting the postage stamp icon: this is the program called Mail.



Once you have found it, click on it. This will open the program.

STEP TWO: Enter The Information

If this is the first time that Mail has started, it will start a configuration window for you.

Your full name should be written the same as you would write on a letter: capitalized first and capitalized last name.

Your email address should be entered just as you would give it to someone else.

The incoming mail server is “pop3.midiowa.net”, in all lower case letters, without the quotes.. The “Account Type” should be POP.

The user name is the email address without the @midiowa.net part. In this example of jdoe@midiowa.net, the username is just plain “jdoe.” The password is the password for the account. Both of these pieces of information can be found on your registration form.

The outgoing mail server is “smtp.midiowa.net” without quotes.



Welcome to Mail

You have no email accounts configured to use Mail. Please enter the following information to send and receive email.

Full Name: John Doe

Email Address: jdoe@midiowa.net

Incoming Mail Server: pop3.midiowa.net

Account Type: POP

User Name: jdoe

Password:

Outgoing Mail Server (SMTP): smtp.midiowa.net

?

Quit OK

Once you enter the information and press “OK,” your email program is set up! We hope you enjoy using MidIowa Net!